



WIRELESS SOLUTIONS GUIDE

Services + Applications + Technologies

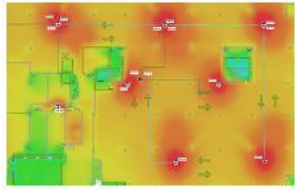


SERVICES

Our professional design, licensing, sites, construction, project management, installation, maintenance, and rental services allow you to work with a single wireless partner from beginning to end. Our talented people will make your project run smoothly, and our services will enhance your wireless operation.

System (RF) Design

The System Design team includes experts in RF design, network design, IT integration, AutoCAD drafting, and technical writing. They provide services for a host of applications including:



- Dispatch Consoles
- Digital Video Surveillance
- MESH, Wi-Fi, and Mobile Data
- Microwave & Wireless Ethernet
- Emergency Responder Radio Systems (ICC/NFPA) for Fire Code
- In Building Cellular (Signal Booster) Systems
- Two-Way Radio Systems



With services including:

- Analysis, Audit and Testing
- System Design
- Propagation, Coverage and Path Profile
- As-Built Documentation

FCC Licensing & Compliance

Our FCC Licensing team takes the complicated and confusing process of filing FCC licensing documents and makes it simple for you. Tracking the fast changing world of FCC Compliance takes focus and experience. We can help with:



- License Preparation and Tracking
- FAA and Tower Registration
- Spectrum Acquisition
- License Management

Tower Sites and Systems

Our Tower Sites & Systems team handles site management and marketing of our communications sites. Day Wireless also operates the TRBOWEST Network, the largest digital two-way radio network in the Northwest. We have the expertise that comes with being one of the largest tower operators in the USA.



- Colocate Your System on One of Our 140+ Sites
- Professional Management Services for Your Tower Sites
- Wide Area Radio and Paging Networks

Communications Construction

Rely on our construction services to successfully take your project from the drawing board to reality. We provide full construction services for communications sites including civil, general, equipment installation, and electrical services.



- Turnkey Tower and Communications Site Construction
- Maintenance, Inspection, Monitoring, Audits
- Certified Electrical Division
- Tower Equipment Installations

Project Management

Our Project Management Division is made up of experienced and motivated teams, ready to take on any project from beginning to end.



- Certified PMP Project Managers
- Complete Project Ownership from Planning to Acceptance

Installation, Field Services, & Maintenance

Keep your system at peak performance with trained and certified technicians at your service, in the shop or at your site, available 24 hours a day. Day Wireless Systems is a Motorola Service Elite Specialist, meaning we've demonstrated consistent capabilities in performance, personnel, and training, and provide the highest level of Motorola service. Services include:



- Shop, Field, Tower, and Site Installation
- Complete Vehicle Upfitting
- Service & Repair for all Major Brands
- Maintenance Programs to Extend the Life of Your System
- 24/7 Emergency Service
- Radar Calibration
- RF Safety Reports
- Coverage Documentation
- Interference Studies
- System/Site Audits

Rentals

When you have a short term need for radios, cell phones or satellite phones, go to the source you can depend on. Our Rental Account Reps have experience in countless applications and can provide the guidance to help your rental run smoothly. Our rentals team has:



- Thousands of Radios, Sat Phones, and Cellular Units Available
- Fast, Accurate Service
- Knowledgeable Account Reps
- Programs & Equipment Designed to Meet Your Exact Needs

TECHNOLOGIES



We solve productivity and safety problems, and reduce operating expenses by using wireless technology that we design and deploy.

Motorola Manufacturer's Rep (MR) Program - State & Local, Fed Govt

Day Wireless Systems is an Authorized Motorola MR for State & Local and Federal Government sales. This program allows us to represent and sell equipment on Motorola's behalf, and allows customers to take advantage of contracted price agreements. Motorola MR equipment includes, but is not limited to:

- Portable and Mobile P25 Radios
- Base Stations and Infrastructure
- Radio Dispatch Consoles
- Computer Aided Dispatch & Records Management
- 911 Call Taking Systems
- Body Worn Cameras and In-Vehicle Video
- Video Evidence Management Software
- FirstNet Devices
- Interoperability Gateways

Commercial/Industrial Two-Way Radio and Paging Systems

Business and industry have turned to two-way radio technology for years due to its reliability, durability, and low cost of ownership. Capabilities are more advanced than ever with millions every year invested on next generation systems. Radio voice and data systems today are capable of providing exactly the coverage and capabilities you need. Coverage applications include:

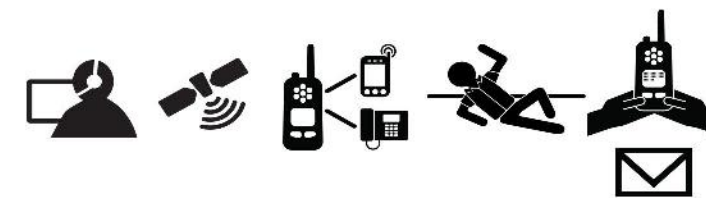
- Local Coverage of Facility, Agriculture and Campus Applications
- Wide-Area Metro or Regional Coverage
- Carrier Systems for Multi State Coverage
- National/Global Site Connect Using IP Radio



MOTOTRBO Software Applications

Software applications include:

- IP Dispatch Consoles & Recording
- Indoor and Outdoor GPS
- Telemetry and Industrial Internet of Things (IIoT)
- Broadband Device/Cellphone & Radio Integration
- Safety Apps: Man Down, Lone Worker, Alarms
- Productivity Apps: Text, Email, Work/Job Ticket



In-Building Coverage - Emergency Responder Radio DAS & BDA Systems

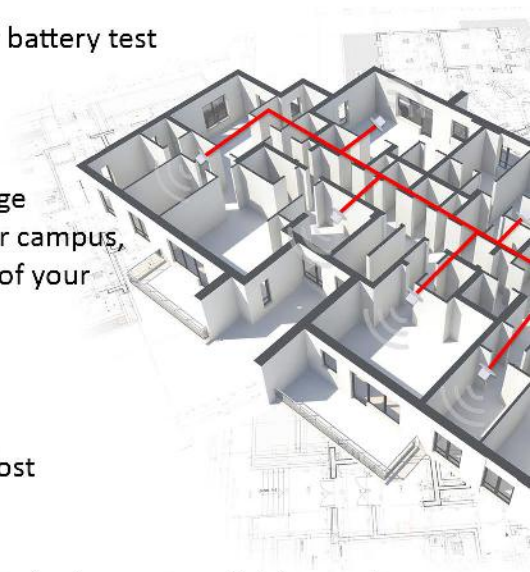
Fire Code standards by the ICC and NFPA state that emergency responders shall have approved radio coverage within buildings. Improperly designed systems will cause interference to public safety radio systems when they need it the most. Key elements of most Emergency Responder Radio Coverage (ERRC) include:

- Minimal signal level of -95 dBm in 90% of the structure
- Back-up power for 24 hours of operation
- Applies to structures of 50,000 sf or those with below ground floors
- Coverage test using a 20 grid or 40 grid process
- Annual certification of equipment with grid coverage test and one hour battery test
- Must be tested by an FCC licensed or factory certified technician

In-Building Coverage - Cellular Boosters & Carrier DAS

Can you hear me? Cellular users have come to expect voice and data coverage everywhere they go. Whether it's a public venue, small office, large office, or campus, Day Wireless will help satisfy the demanding voice and data coverage needs of your customers and employees with Carrier DAS.

- Consumer, Industrial Signal Boosters, Engineered DAS, and Small Cell
- Single or Multi Carrier Systems
- Multiple Ownership Model Options – Owner funded, Carrier, Neutral Host



Wireless & IT Infrastructure

Networking with wireless technology can be done with great throughput, fast deployment and high security. Applications and technologies include:

- Point-to-Point/Multi-Point, WLAN, MESH, Wi-Fi
- Wireless Routers, Gateways, and Modems
- Microwave and MPLS
- Network and Storage Switches



IP Video

Video surveillance protects property and people. Applications today include:

- License Plate Recognition
- In-Vehicle Recording
- Campus Wide Monitoring & Access Control
- Body Worn Cameras



UNLIMITED WIRELESS APPLICATIONS



A **City** was paying thousands each month to the local telecom company to lease T1 lines for connecting outlying buildings. Learn how a **Wireless Point-to-Point Ethernet** solution can save your company thousands through T1 replacement.



A **Manufacturing Company** had trouble communicating in such a noisy environment. Ask us how **Digital Radio** with clean, clear audio helped improve their response time and overall efficiency.



A **University** needed to provide in building wireless coverage for public safety. Learn how our **BDA/DAS in building** solutions provide public safety radio coverage indoors, with the ability to amplify cellular coverage as well.



A major **Trucking Company** was having problems with poor cellular coverage. Learn how **TRBOWEST** took care of their voice & GPS needs, and got their entire fleet hands-free compliant.



A **Port** needed a better security solution for their personnel and equipment. Learn how a **Digital Video Surveillance** solution can be quick to deploy, rugged, and effective.



A **Hospital** needed to give their workers mobile access to patient medical records. Learn how our **WLAN solution** and mobility products can improve resident care and staff productivity by adding predictive Wi-Fi coverage and huge throughput.



A **Police Agency** wanted to increase policing transparency, yet not get bogged down with managing all the video evidence. Learn how a **Body Worn Camera solution** from Motorola Solutions combines the best-in-class body worn camera device with the easy to operate Command Central Vault for speedy access to files and redaction capability.



A **Fire Department** needed a dual band radio solution in order to communicate with disparate agencies during incident response. Ask us about **APX dual band P25 radios**.



Ask us about any of the case studies mentioned above
View more vertical market solutions online including:

Construction	Law Enforcement
Education	Manufacturing
Federal Government	Healthcare
Fire & Rescue	Transportation
Hospitality	Utilities

www.daywireless.com

DAY WIRELESS SYSTEMS

Your challenges. Our expertise. Results you can depend on.

Largest Wireless Integrator in the West

Day Wireless Systems is the largest, full-service wireless integrator in the West, and one of Motorola Solutions' largest partners in the USA.

100-Year Heritage

The company is privately held and led by third generation family members. We trace our communications history back to the founding of Estacada Telephone in 1905. You can count on our stability.

Services Provided

System Design
Audits, Surveys and Coverage Studies
Maintenance Programs
Site Management
Project Management

Site Construction
Electrical Construction
Rentals
FCC Licensing
RF Safety Studies

Solutions Provided

Two-Way Radio
RF LAN/WAN/Wi-Fi/MESH
Microwave/PTP
Mobile Data and GPS
Telematics

In-Building DAS Systems
Dispatch Consoles and E911
Video Surveillance
Access Control and Monitoring

You Are in Good Company

Our customers vary in size but include the following:

-  • 57 Fortune 100 Companies
-  • 150 School Districts
-  • 124 Colleges & Universities
-  • 600 Public Safety & Govt Agencies
-  • 66 Federal Agencies
-  • 148 Hospitals & Medical Centers



Locations

Washington

Aberdeen	360-533-5857
Burlington	360-755-9625
Everett	425-258-0554
Lacey	360-491-9000
Longview	360-423-3690
Moses Lake	509-765-8807
Pasco	509-547-8502
SeaTac	206-878-3750
Spokane	509-484-1400
Vancouver	360-256-9444
Wenatchee	509-662-8707
Yakima	509-248-0314

Oregon

Bend	541-330-8807
Klamath Falls	541-884-4315
Medford	541-772-5602
Milwaukie (HQ)	503-659-1240

Administrative
Tower Sites/Services
FCC Licensing
System Design

Sales Center	800-503-3433
Newport	541-265-6201
Portland	503-228-9292
Salem	503-581-2932

California

Benicia	707-746-5920
Burbank	818-557-7390
Chico	530-342-0890
San Diego	858-537-0709

Idaho

Boise	208-323-1976
Idaho Falls	208-535-1430
Pocatello	208-232-1499

Wyoming

Afton	307-885-5255
-------	--------------

Utah

Orem	801-225-2779
------	--------------



www.daywireless.com